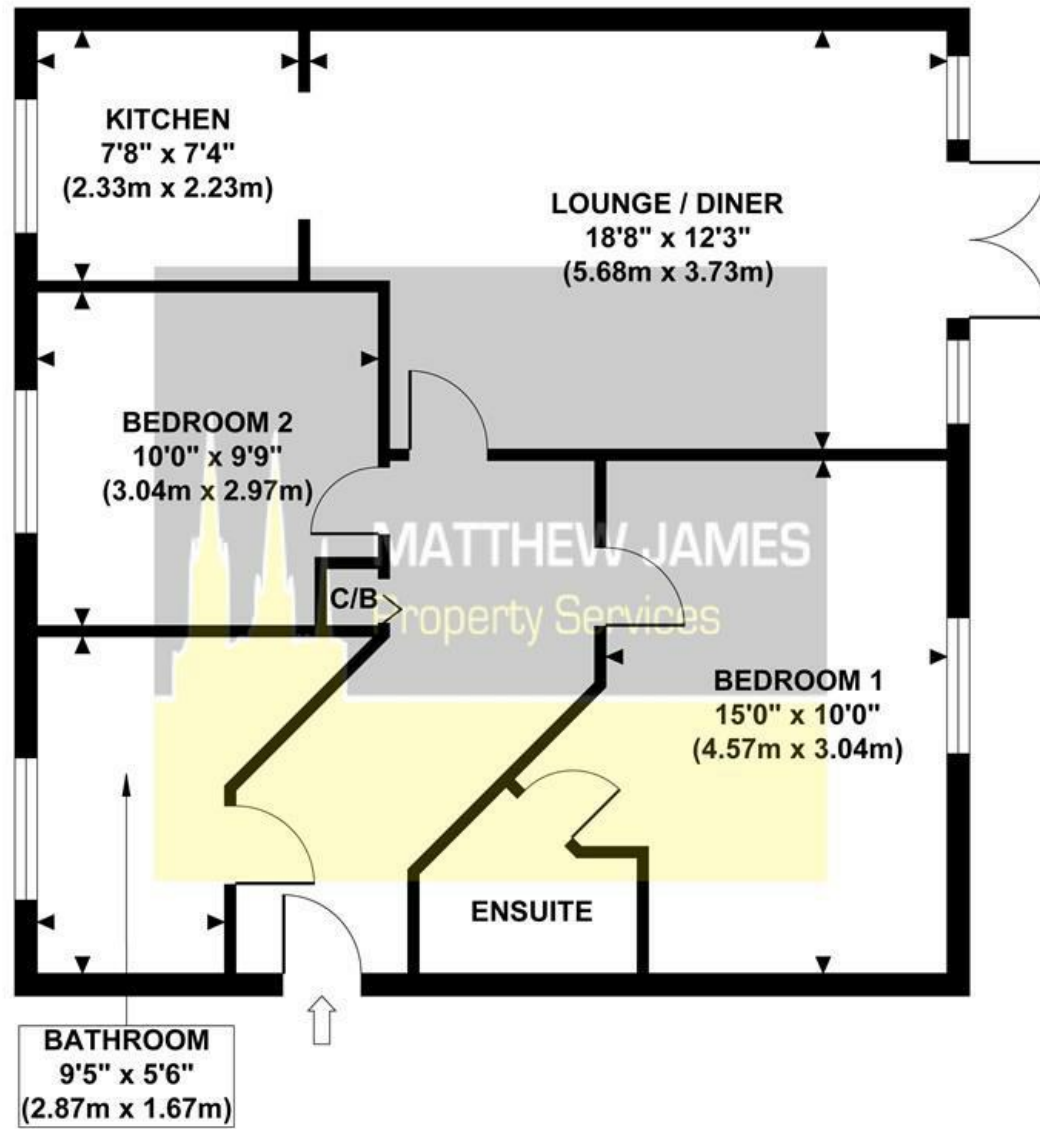


BEWICK CROFT

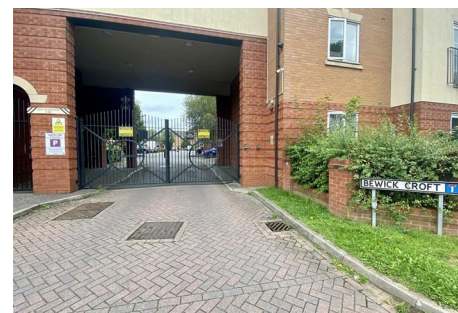
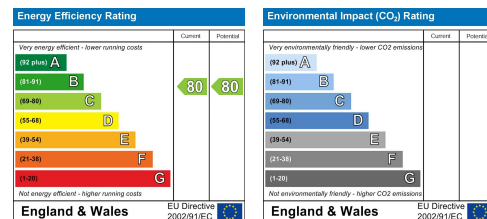
Approximate Gross Internal Area 733 sq ft / 68.10 sq m



GROSS INTERNAL FLOOR AREA 733 SQ FT

Although every attempt has been made to ensure accuracy, all measurements are approximate and no responsibility is taken for any error, omission, or mid-statement. This floor plan is for illustrative purposes only and not to scale. Measured in accordance to RICS standards.

These particulars, whilst believed to be accurate are set out as a general outline only for guidance and do not constitute any part of an offer or contract. Intending purchasers should not rely on them as statements of representation of fact, but must satisfy themselves by inspection or otherwise as to their accuracy. No person in this firm's employment has the authority to make or give any representation or warranty in respect of the property.



16 Bewick Croft Stoke Heath, Coventry CV2 4QR

50% SHARED OWNERSHIP PROPERTY OFFERED FOR SALE WITH NO CHAIN This two bedroom second floor apartment is located within a contemporary apartment block in the Stoke Heath area. Ideally located for access to the city centre and within walking distance to plenty of local shops and amenities. This is the ideal property for first time buyers or anyone wanting to own their own home with a lower deposit available.

The apartments are secured with gated access into the communal grounds which are well maintained with plenty of greenery. Access into the flat via security door into the communal hallway with stairs leading to the second floor.

The property features an open-plan layout, combining the lounge, dining area and kitchen. French doors to the Juliet balcony are a lovely feature and offer lovely views over the greenery at the rear. The fitted kitchen has a range of wall and base units, built-in oven and hob, space for washing machine and a fridge freezer. There are two spacious double bedrooms. The master bedroom comes with an en-suite shower

£62,500

CONTACT INFORMATION

24a Warwick Row, Coventry CV1 1EY

02477 170170

info@matthewjames.uk.com

www.matthewjames.uk.com

Facebook

Twitter

16 Bewick Croft

Stoke Heath, Coventry CV2 4QR



- 50% Shared Ownership
- Secure Gated Access
- Allocated Parking Space and Visitor Parking Spaces
- Walking Distance to Local Shops and Amenities
- Close to Coventry City Centre
- Two Double Bedrooms / Master Bedroom En-Suite
- Open Plan Lounge / Diner / Kitchen
- Ideal for First Time Buyers / Small Families
- 82 Years Remaining On Lease
- CALL NOW TO VIEW!

Secure Gated Access

Entrance Hallway

Lounge/Diner

18'8" x 12'3" (5.69m x 3.73m')

Fitted Kitchen

7'8" x 7'4" (2.34m x 2.24m')

Bedroom One

15'0" x 10'0" (4.57m x 3.05m)

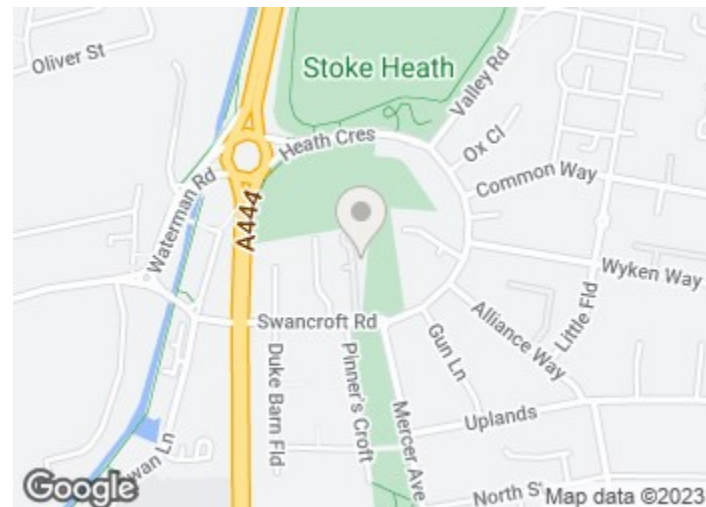
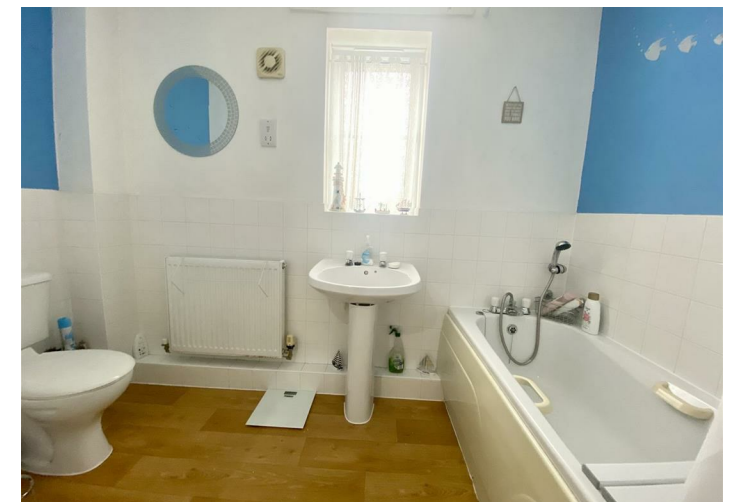
En-Suite

Bedroom Two

10'0" x 9'9" (3.05m x 2.97m')

Fitted Bathroom

9'5" x 5'6" (2.87m x 1.68m')



Directions

